



Columbia County Voters' Pamphlet

Primary Election May 17, 2016

Dear Columbia County Voters:

The Columbia County Voters' Pamphlet is published to inform voters in regard to local candidates and measures you will find on your ballot. I would like to take this opportunity to pass on to you some important information regarding the May 17, 2016, Primary Election:

- **Returning your voted ballot by mail.** Due to changes in the USPS distribution network and service standards, it is advisable that **voted ballots should not be mailed later than Thursday, May 12.** If a ballot cannot be mailed by this day, please visit a local drop site or use a drop box. Ballots received later than 8pm Election night will not be accepted, regardless of postmark.
- **Secrecy Envelopes.** The secrecy envelope is purely optional. Should you find yourself sealing your ballot, and omitting the secrecy envelope, do not worry. Your ballot will still be accepted.
- **Ballot Arrangement.** Candidates are arranged in a random alphabet order established by the Secretary of State for each election. The candidate will be listed in the same order in this pamphlet and on the ballot. Only the applicable candidates and measures for your precinct and voter registration's residential address will appear on your ballot.
- **Extended Hours To Accommodate The Public.** The elections office will be **open to the public until 7pm Thursday 12 May, 2016** for last minute assistance for updating your registration and obtaining or reissued ballot (new physical or mailing address) or for requesting a replacement ballot (damaged/lost ballot).
- **Voting for Precinct Committee Persons.** If you are affiliated with a Political Party holding a PCP election (Democrat or Republican), you will have received a PCP ballot. Please ensure you vote **only** for your precinct. Your precinct number can be found on the Green signature return envelope prominently to the right of your name and address. Directions and a visual aide to find this number can also be found on the ballot.

Make sure your vote counts! Ballots must be received by the Elections Office, no later than 8:00 p.m., Tuesday, May 17, 2016, to be counted. Drop site locations are listed on page 8 of this voters' pamphlet.

It is my honor and privilege to serve as your County Clerk.

Sincerely,

A handwritten signature in cursive script that reads "Elizabeth 'Betty' Huser".

Elizabeth "Betty" Huser
Columbia County Clerk

ATTENTION

This is the beginning of your county voters' pamphlet. The county portion of this joint voters' pamphlet is inserted in the center of the state portion. Each page of the county voters' pamphlet is clearly marked with a color bar on the outside edge. All information contained in the county portion of this pamphlet has been assembled and printed by your County Clerk.

Columbia County

Commissioner, Position 1



Susan Conn
Non-Partisan

OCCUPATION: St. Helens City Councilor; SHEDCO Liaison; St. Helens Community Foundation Board; Columbia Pacific Economic Development District Board (Coi-Pac).

OCCUPATIONAL BACKGROUND: Small Business Owner; Special Olympics Area Director; Instructional Assistant; Retail; Legal and CPA Assistant; Banking; Spotlight newspaper; GM Customer Relations Manager; Adult Vocational ESL Instructor; Pharmacy Technician; Non-Profit Board Member.

EDUCATIONAL BACKGROUND: Diablo Valley College; Los Medanos Community College; Mt. San Antonio College.

PRIOR GOVERNMENTAL EXPERIENCE:

St. Helens City Council; St. Helens School Board; Columbia County Commission on Children & Families; Library Board; Precinct Person.

A PROVEN RECORD OF LEADERSHIP, SERVICE AND INTEGRITY.

Serving on the St. Helens School Board, City Council and Columbia County Commission on Children & Families has given me valuable experience in government administration, planning, policy management, finance and an understanding of how changing social and economic influences impact our community. My experience developing consensus and collaborations will be a catalyst for unifying county efforts to bring back economic stability and meet our citizens' needs.

HEALTHY COMMUNITIES START WITH HEALTHY FAMILIES:

- Helped fund CASA, Head Start, after-school programs.
- Worked to establish Sacajawea Health Center, some of state's first "school based businesses".
- Recognize need to create career paths for graduating students.

ECONOMIC DEVELOPMENT & JOBS ARE CRITICAL:

- Believes in creating a balanced local economy.
- Values retaining current businesses while bringing in new, diverse industries.
- Supports improved job-training, linking education to employers.
- Endorses responsible stewardship of resources.

PUBLIC SAFETY SHOULD NEVER BE COMPROMISED:

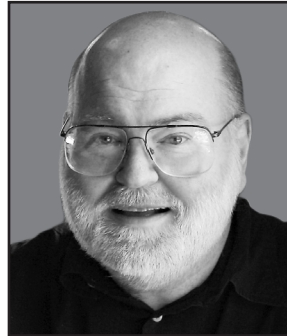
- Led successful effort to keep jail funded and open.
- Introduced City Council Resolution to increase rail safety.
- Helped bring Crisis Intervention training to the County.

For 27 years I have worked in elective office and as a volunteer. I've heard your concerns and continue to work to address them. I am passionate about improving the economic vitality and livability of Columbia County which will attract businesses without compromising our values. I'd appreciate your vote.

(This information furnished by Susan Conn)

The above information has not been verified for accuracy by the county. (ORS 251.335 (3b))

Commissioner, Position 1



Brady Preheim
Non-Partisan

OCCUPATION: Business owner -Preheim Computers – 18 years

OCCUPATIONAL BACKGROUND: Computer consultant, software developer 32 years

EDUCATIONAL BACKGROUND: Graduate St. Helens HS 1982; OSU; Northern Virginia Community College

PRIOR GOVERNMENTAL EXPERIENCE: Chairperson CASA; Chairperson South Columbia Chamber; Ford Family Community Ambassador; St. Helens Urban Renewal, Scappoose Economic Development

- Open and transparent leadership
- Stood up against wasteful hospital project
- Oppose wasteful spending at the county jail
- Will restore trust in County Government
- Not a career politician

We can do better. For too long we have had a county run by career bureaucrats instead of common sense. The courthouse is closed to the public on Friday, yet many still work. This does not save money; it only creates inconvenience.

We can do better. The jail was built too large for our needs- a mistake made by the County Commissioners. CC Rider has had their budget slashed by the Commissioners so they no longer qualify for matching fund grants. Instead of looking for solutions to these problems, our leadership repeatedly asks the voters to pay more in taxes. I have long and loudly opposed wasteful spending.

We can do better. Our county has lost over 20 percent of non-farm jobs and yet people and supplies are routinely acquired from outside the county. If elected, I will give preference to hiring and buying locally.

We can do better. There are two sides to every issue. The Commissioners make decisions in unison with little regard for opposing views. I pledge to consider all views.

We can do better. Our county has spent millions investing in failed fossil fuel industries. We must focus our dollars on sustainable businesses; breaking the boom and bust cycle inevitable with fossil fuels.

Some Supporters:

Mayors: Cheryl Young
KOHl Owner/Manager: Marty Rowe
CleanColumbiaCounty.info: Nancy Ward
Columbia Health District Chair: Tammy Maygra
VP Ironworkers, Jail Committee Member: Jamie Maygra
Community Advocate: Nancy Whitney

**THIS TIME
VOTE PREHEIM
County Commissioner**

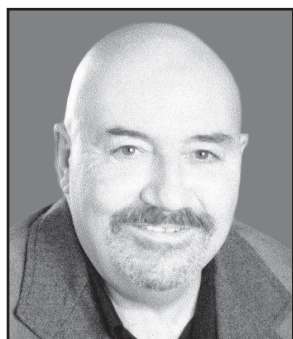
<http://www.PreheimforCC.info>

(This information furnished by Brady Preheim)

The above information has not been verified for accuracy by the county. (ORS 251.335 (3b))

Columbia County

Commissioner, Position 1



Joel Yarbor
Non-Partisan

OCCUPATION: Self Employed Farrier

OCCUPATIONAL BACKGROUND: Small Business Owner-43 years. 30 years as a Contractor/Carpenter, Race Horse Trainer. Served as Exalted Ruler 1995-96 and Trustee, Elks Lodge.

EDUCATIONAL BACKGROUND: Graduate of SHHS, served in US Army completing special forces training and serving in Vietnam with 101st and 173rd airborne division. Certified Farrier School of Agriculture, OSU.

PRIOR GOVERNMENTAL EXPERIENCE: Served as Columbia County Commissioner 1995-1998. Served on Board of Dept. of Transportation, Chairman of Columbia County Commissioners, Columbia County Board of Housing, Oregon Quarter Horse Racing Division Board of Directors and Columbia County Rodeo Committee.

PRIORITIES:

***Living wage jobs in our communities** - I have the experience and knowledge to make this happen. I was successful during my last term as County Commissioner in helping locate two major employers into our area. I will work closely with the Port to make property available for new businesses, creating property tax revenue for the County and creating local family wage jobs.

***Veteran's Needs** - With more Veterans per capita in our County, it is vital we provide the necessary support/services that they need. Being a Veteran myself, I have the personal experience and insight necessary to help guide the County to fulfill these needs.

***Open for Business** - It is essential to our existing businesses and to attract new businesses to Columbia County, that our County is open for business all week. The last time I was County Commissioner, we were faced with budget shortfalls, but kept the County open for business.

Unlike so many candidates that run for office, I have a proven track record of creating jobs and the corporate tax revenue that goes along with them. I'm not a career politician, am not part of any political machine, nor am I influenced by special interest groups.

This is my passion, I have 5 children & 12 grandchildren that live in the County, like the majority of people, I want the best opportunities for our youth.

(This information furnished by Joel Yarbor)

The above information has not been verified for accuracy by the county. (ORS 251.335 (3b))

Commissioner, Position 1



Margaret C Magruder
Non-Partisan

OCCUPATION: Coordinator, Lower Columbia River Watershed Council; Manager, Oregon Shepherd, LLC; Owner/Operator, Magruder Farms

OCCUPATIONAL BACKGROUND: Third generation Columbia County farmer; 4-H Leader; Community Volunteer; Mother; Grandmother

EDUCATIONAL BACKGROUND: Clatskanie High School, graduate; Willamette University, BA; Syracuse University, MA

PRIOR GOVERNMENTAL EXPERIENCE: District 5J School Board; Columbia County Democratic Central Committee; Columbia County Budget Committee; Oregon State Weed Board; American Lamb Board; Oregon Sheep Commission; Oregon Board of Agriculture

My experience in government and civic affairs, my family's deeply-ingrained commitment to public service, my knowledge of natural resources and geography, my lifelong involvement in the issues facing Columbia County, have given me the ability to work collaboratively with fellow citizens in achieving a balance between livability and prosperity in the county we call home.

- A balance between services that Columbia County residents need, and the efficient use of your tax dollars.
- A balance between job creation in all areas of the county, and maintaining livability.
- A balance between tax valuation to pay for public services, and sustaining Columbia County's healthy, beautiful environment.
- A balance between large industries, small businesses, agriculture and forestry.
- A balance in the efforts to bring economic development to Scappoose, St. Helens, Rainier, Vernonia, Clatskanie, and the rural communities of Columbia County.
- A balance between the needs of all county residents - old, young and middle-aged, commuters and those who work close to home, families, singles, and retired folks.
- A balance between the viewpoints and opinions of all Columbia County residents regardless of whether they live in the rural areas, small communities or larger cities.

As your Columbia County Commissioner I promise to listen to all sides of any county issue and work with you towards resolutions that achieve a balance satisfactory to us all.

Fair - Accessible - Responsive

**Margaret Magruder, Columbia County Commissioner
Position 1 - Achieving Balance**

Endorsed by: NW Oregon Labor Council, AFL-CIO

(This information furnished by Margaret C. Magruder)

The above information has not been verified for accuracy by the county. (ORS 251.335 (3b))

Columbia County

Commissioner, Position 1



Wayne Mayo

Non-Partisan

OCCUPATION: 35 year business owner- Mayo Construction, Property Manager.

OCCUPATIONAL BACKGROUND: Business Owner, lumber broker, Founder and Director 501 C-3 Portland Corporations, Grant Writer, Chairman of 2000 PUD takeovers, Author of Measure 5-190, 2008.

EDUCATIONAL BACKGROUND: St. Helens graduate, Studied at OIT: Engineering, PCC: Economics, PSU: Economics, State Board Certified Contractor.

PRIOR GOVERNMENTAL EXPERIENCE: Scappoose Planning Commissioner 4 yrs.; St. Helens Park/Rec. Commissioner 3 yrs.; Directed 2 Portland Social Services 4 yrs.; Formed corporations, wrote grants; supervised audits, staff.

Priorities:

To serve Columbia County's needs ahead and strengthen our existing safety, infrastructure, educational, civil, and social services.

With the \$17 million just committed for the **Advanced Manufacturing Research Center** through the cooperation of the legislature, Boeing, PCC, PSU, and OSU at the Columbia County Air Park, we will become a magnet for companies that may seek to relocate here.

Expediting the permit and facilitation process, while protecting the environment will certainly be a priority. In addition, lumber products and tissue packaging-finishing need to be facilitated and restored.

Government does not create good jobs. Government's role is to reduce impediments to the real engine of employment; private business.

Columbia County is a great place to live, work, and raise a family. I'm committed to supporting new businesses, professionals, industries, and restarting former industries to improve quality of life for everyone in Columbia County.

(This information furnished by Wayne Mayo)

The above information has not been verified for accuracy by the county. (ORS 251.335 (3b))

Commissioner, Position 3



Alex Tardif

Non-Partisan

OCCUPATION: Tax Professional

OCCUPATIONAL BACKGROUND: Tax Accountant for private sector – specializing in tax department organization, and compliance strategies. Income tax auditor State of Oregon.

EDUCATIONAL BACKGROUND: University of Portland – Bachelors in Business Administration, degree in Accounting; Graduate of Scappoose High School

PRIOR GOVERNMENTAL EXPERIENCE:

Tax auditor for the State of Oregon. Scappoose School Board Budget Committee.

Our county is struggling financially because of tax funding issues and financial decisions by entrenched incumbents. In the last twenty years we have attempted to create jobs that have not been sustainable when the economy of the region changes. My opponent proposed and supported adding to our overall indebtedness by investing in speculative infrastructure in North County, without creating long-term jobs-all at taxpayer expense. I will create a new, clean vision for Columbia County.

As a tax professional, I have the skills to understand budgets and finances, in-depth knowledge of state regulations, tax law, audit and accounting. As a county commissioner, I will use my skills and knowledge to perform the analyses necessary to provide viable, sustainable solutions to put our county back on track to success. My vision includes focusing on our quality of life with a viable economy in all communities in our county.

I believe in term limits. If you cannot fulfill your promises in eight years, you are not going to get it done. I believe in true and enforceable accountability and transparency. I believe important decisions should not be made behind closed doors, and that all people should have a voice in our future.

I know we can do better.

ENDORSEMENTS

Bill and Claudia Eagle

Jim and Paulette Lichatowich

Pete McHugh

Sean McNabb

Jack and Nancy Phillips

Darrel Whipple

A Voice for the Future of Columbia County

Alex4columbiacounty.com

(This information furnished by Alex Tardif)

The above information has not been verified for accuracy by the county. (ORS 251.335 (3b))

Columbia County

Commissioner, Position 3

Measure 5-251



Tony Hyde
Non-Partisan

OCCUPATION: Columbia County Commissioner

OCCUPATIONAL BACKGROUND: Columbia County Commissioner; logger

EDUCATIONAL BACKGROUND: Kirkwood Community College; University of Iowa.

PRIOR GOVERNMENT EXPERIENCE: Board of Commissioners, 1996-present; Board of Directors, Association of Oregon Counties, 1997-present; Mayor, City of Vernonia, 1993 -1996; City Councilor, Vernonia, 1989-1993.

WE NEED TONY HYDE AS A STRONG AND EFFECTIVE CHAMPION FOR COLUMBIA COUNTY

“As a Columbia County Commissioner, Tony has worked tirelessly to make sure our county’s needs are addressed in good times and bad. He has delivered new jobs and economic development while protecting Columbia County’s quality of life. He has the vision and direction to continue to achieve our county’s priorities.” Senator Betsy Johnson

HYDE’S ACCOMPLISHMENTS

Returned more jobs to Columbia County
Expanded Veterans Services
Improved roads, bridges and trails across county
Increased health care support for Columbia County
Brought higher education opportunities to Columbia County
Found more strategic use of public resources for public safety
Supported small business development opportunities throughout the county
Endorsed by NW Oregon Labor Council, AFL-CIO

HYDE’S GOALS

Continue to build a **stronger county economy** to withstand future economic upheaval

Protect Columbia County communities’ small town identities and quality of life

Find **new partnerships and innovative cost-saving** to address current budget shortfalls

Upgrade county infrastructure system of roads and trails to meet current county needs

Bring more support to our seniors and Veterans

Convene state, local leaders and neighboring counties **on resiliency for future natural disaster events**

HYDE’S RECORD OF SERVICE

Founder, Columbia County Economic Development team
Columbia Homeland Security and Emergency Management Commission
Columbia Pacific Economic Development Council
Association of Oregon Counties; past President, Chair Economic and Community Development Steering Committee
Columbia Emergency Planning Association; Local Emergency Planning Committee
Oregon Emergency Management Association
Forest Trust Lands Advisory Committee
Governor’s Funding Team on “Economy and Jobs”
Association of O&C Counties, President
American Leadership Forum, Senior Fellow

(This information furnished by Tony Hyde)

The above information has not been verified for accuracy by the county. (ORS 251.335 (3b))

BALLOT TITLE

FORMATION OF COLUMBIA COUNTY RIDER TRANSPORTATION DISTRICT

QUESTION: Shall a transportation special district be formed with a permanent rate of \$0.23 per \$1,000 of assessed value beginning FY 2016-17?

SUMMARY: This measure creates the Columbia County Rider Transportation District (the “District”), which shall be a special district for the purpose of providing public transportation in Columbia County. Public transportation is currently provided by Columbia County through its transit department, Columbia County Rider (“CC Rider”). If this measure passes, the District will manage and operate CC Rider - independently from the County - and a board of seven directors elected from the District at large will govern the District. The boundaries of the proposed district will include the area within Columbia County, including all Cities in the County except for the Cities of Clatskanie and Prescott, which did not consent to inclusion.

If approved, this measure will authorize a permanent rate limit of \$0.23 per \$1,000 of assessed value, beginning in fiscal year 2016-17, to provide a stable, ongoing source of funding for CC Rider. In the first year, tax revenue is estimated to be \$991,961.

EXPLANATORY STATEMENT

This measure would create a new special district called the Columbia County Rider Transportation District (the “District”), which will operate the Columbia County Rider (“CC Rider”) public transit system. CC Rider provides fixed-route bus service to all riders county-wide and dial-a-ride service to eligible riders (such as riders with disabilities or other qualifying needs). Service includes daily connections into Portland, Washington County, and the Longview/Kelso area, as well as service to Astoria in coordination with Sunset Empire Transit District. CC Rider provides an average of over 7,600 rides per month.

CC Rider currently operates as a department of Columbia County, which is governed by the Board of County Commissioners. If this measure passes, the newly created District will assume the operation of CC Rider. The District will be governed by a seven-member Board of Directors, elected from the district at large. The District will contain the area within the boundaries of Columbia County, including its Cities except for the Cities of Clatskanie and Prescott, which did not consent to inclusion. If the measure fails, the new District will not be created.

If approved, the measure will authorize a tax rate of \$0.23 per \$1,000 of assessed value for all property within the District. The rate is expected to raise \$991,961 during the first year and \$1,252,487 annually, by the end of the 10th year (2025). The rate proposed would amount to \$46 per year for a property valued at \$200,000.

CC Rider operating funds currently come from a variety of sources including: state and federal grants (which account for approximately 71% of CC Rider’s budget); the County general fund; community contributions (voluntary payments from the six Cities); contracts with Portland Community College (“PCC”) to provide transit service from Columbia County to the PCC Rock Creek Campus; and Ride Care, the Medicaid Ride Brokerage that serves Columbia County. Local funds from the County, Cities, and PCC are used primarily as matching funds for federal and state grants. Local funds can vary significantly from year to year, which affects CC Rider’s ability to access federal and state grants. For this reason, the District is being proposed to enable a stable source of funding through the permanent tax rate. Stable funding will allow CC Rider to qualify for more grant funds, allowing CC Rider to improve and increase service.

Submitted by:
Anthony Hyde, Chair

Columbia County

Measure 5-252

BALLOT TITLE

REQUEST TO ANNEX JULIAN PROPERTY INTO THE CITY OF ST. HELENS

QUESTION: Should land located at 35092 Pittsburg Road be annexed into the City of St. Helens?

SUMMARY: On February 4, 2014, James Julian applied to the City of St. Helens for annexation of approximately 1.8 acres of land located at 35092 Pittsburg Road. This property is also described as Columbia County Map & Tax Lot Number 4N1W-5BC-7600. The City Planning Commission recommended to the City Council that the property be annexed and that the property have a Comprehensive Plan designation of Suburban Residential, SR, and be zoned Moderate Residential, R7. The City Council approved the recommendation on February 3, 2016. On February 17, 2016, the City Council adopted Ordinance No. 3204, which would officially approve the annexation and zone the property R7, Moderate Residential, contingent upon the voters approving the annexation as required by the City Charter, Chapter 1, Section 3. Approval of this request will make the property subject to all City ordinances and regulations.

EXPLANATORY STATEMENT

James Julian applied to the City of St. Helens for annexation of approximately 1.8 acres of land located at 35092 Pittsburg Road. Annexation is the process whereby property is included or brought into the city limits. The City has a process for evaluating annexation requests that includes conformance with applicable State laws, the City Chapter, City Comprehensive Plan, and City Development Code. The process requires that the City Planning Commission hold a public hearing on annexation requests and make a recommendation to the City Council. The City Council also holds a public hearing and reviews the recommendation of the Planning Commission. If the City Council approves the annexation request, then the City Charter requires that a majority vote of the voters of St. Helens approve the annexation.

For the James Julian annexation request, the Planning Commission held a public hearing, found that the request complied with the process for annexation, and recommended approval of the annexation request to the City Council. The City Council approved the recommendation to annex the Julian property, which is approximately 1.8 acres in size, on February 3, 2016. The next step is for the voters of St. Helens to approve or reject the request to annex this property. If annexed, the property will be zoned R7, Moderate Residential, and be subject to all City ordinances and regulations.

Submitted by:
Kathy Payne
City Elections Official

Measure 5-253

BALLOT TITLE

FIVE YEAR LOCAL OPTION LEVY FOR EMERGENCY SERVICES TRAINING & OPERATIONS.

QUESTION: Shall the District levy taxes of \$0.32 per \$1,000 of assessed value for five years beginning 2016-2017 for training & operations? This measure may cause property taxes to increase more than three percent and will be payable from taxes on property or property ownership that are subject to the limits of Sections 11 and 11b, Article XI of the Oregon Constitution.

SUMMARY: If approved, this measure would provide funding to the Fire District for the salary and benefits package of a Training Captain. This person would be responsible for the training program from its infancy to long term maintenance. Duties of the Training Captain would include but not be limited to: Preparing and maintaining a training calendar, preparing and maintaining personnel training files, working with Oregon Department of Public Safety Standards and Training, assembling drills and training materials, and organizing outside training to keep all staff certified and current. The Training Captain would also be required to respond to incidents during their work shift when applicable, thereby increasing daytime response personnel. This measure is estimated to cost taxpayers an average of \$0.32 per thousand of assessed value each year. For the owner of a home or property, the estimated annual average cost would be \$32 per \$100,000 of taxable assessed value. The levy would raise approximately \$65,294 in fiscal year 2016-17; \$66,926 in 2017-18; \$68,599 in 2018-19; \$70,314 in 2019-20; and \$72,072 in 2020-21.

EXPLANATORY STATEMENT

Vernonia Rural Fire Protection District has proposed this measure for voters' approval. The Board of Directors and staff have determined through research and debate that it is in the best interest of the District to employ an additional full time Training Officer. This measure will provide the funding to hire, train, compensate, and equip a full time person for the length of the term.

VRFPD is requesting a levy for \$0.32 cents per thousand of assessed value each year. This revenue will allow the District to employ a qualified person to assist with several areas of need.

The training Officer would be required to:

- Stabilize and expand the training program, thus allowing flexibility with in the volunteer personnel to modify training schedules as needed to maintain current requirements without causing excess stress to the volunteers' home/family/work schedules.
- Respond to incidents in accordance with District policies and procedures thereby adding to the current average response of two.
- Assist with station and apparatus maintenance,
- Oversee Cadet Program to assist the communities youth involvement and advancement. This will allow us to assist the interested youth within the District to effectively offer career building training and life skill for their future

Submitted by:
Earl Dean Smith, Fire Chief

Measure 5-254

BALLOT TITLE

REPLACEMENT LOCAL OPTION LEVY FOR FIRE AND EMERGENCY MEDICAL RESPONSE

QUESTION: Shall Scappoose Fire maintain emergency response services by levying \$1.24 per \$1,000 assessed property value for five years, beginning FY17? This may cause property taxes to increase more than three percent.

SUMMARY: This proposed levy would replace and increase the current levy which expires June, 2017. This is the first increase in 10 years. The District responded to 1,872 fire and medical emergency calls in 2015. 25% to 30% of these calls overlap with one or more calls. This overlap impacts the District's ability to provide an immediate response to all calls. The levy will retain 9 firefighter/medics, including 2 funded by a federal grant that expires in 2017. It will also add 2 part-time medical-only staff. This will fund two ambulance crews during peak hours and improve response support when calls overlap.

The replacement levy rate is \$1.24 per \$1,000 assessed property value, a \$0.30 increase over the current rate. For a typical home assessed at \$200,000, the annual cost would be \$248, a \$60 increase.

If the levy fails, property taxes on a typical home would decline \$188 annually.

The replacement levy is projected to raise \$7,277,881 over five years.

2017-18	\$1,370,822
2018-19	\$1,411,197
2019-20	\$1,454,305
2020-21	\$1,497,934
2021-22	\$1,542,872

EXPLANATORY STATEMENT

Scappoose Fire District (SFD) provides firefighting, emergency medical, rescue, and fire prevention services. The District serves residents and businesses in the Scappoose, Chapman, Warren, and Holbrook areas.

Why is this called a replacement levy?

It would take the place of the current levy that expires June 2017. It would appear for the first time on the November 2017 property tax bill.

What is its purpose?

The levy supports SFD's highest priority of fast and effective emergency response by:

1. Retaining 7 Firefighter/Paramedics hired since 2007.
2. Retaining 2 Firefighter/EMTs hired late 2015 with federal grant funds that expire in 2017.
3. Hiring 2 part-time, medical-only staff during peak activity hours.

This staffing level would provide 24 hour emergency response for two ambulances, plus another ambulance staffed with volunteer firefighters.

Why is additional staffing during peak activity hours being proposed?

Scappoose response teams include Firefighters, EMTs and Paramedics with the ability to provide immediate life-saving care at medical, rescue incidents and fires with a combination of volunteer and career personnel. The number of emergency response calls for SFD's services has increased from 1,359 in 2007 to 1,842 in 2015. Almost 30% of these are overlapping emergency response calls. This increased demand, combined

with increasing overlapping calls, challenges SFD's ability to respond in a quick and effective manner. Two Firefighter/EMTs were hired recently with funds from a two-year federal grant. The proposed addition of two part-time, medical-only staff during peak activity hours would improve SFD's ability to provide fast and effective emergency response services during periods of high demand when volunteers might not be available.

What does the measure call for?

A "yes" vote would result in a local option levy tax rate of \$1.24 per \$1,000 assessed property value, an increase of \$0.30 over the current rate. For property assessed at \$200,000, the cost would be approximately \$248 per year, an increase of about \$60 over the current local option levy.

A "no" vote would result in no replacement for the current local option levy, which expires in June 2017. The current local option levy funds ambulance services.

What happens if the levy fails?

Without the 5-year levy, the permanent tax rate of \$1.1145 per \$1,000 assessed property value is not adequate to properly ensure fire and ambulance service. Residents will most likely see delays in response to their emergency and the District will be unable to run the ambulance service.

If the levy passes, the revenue would be used to:

- Maintain the current paid Firefighter/Paramedics, and the two federal grant positions
- Hire two part time medical only staff during peak periods.

What will it cost me?

The levy increases the current levy from \$.94 to \$1.24 per \$1,000. The \$0.30 increase adds \$60 per year to a house with an assessed property value of \$200,000. The rate of \$1.24 per \$1,000 does cost homeowners a total of \$248 per year for a house assessed at \$200,000.

Submitted by:
David Grant, President

BALLOT DROP SITE LOCATIONS

Your ballot must be received in the Columbia County Elections Office, or at an official drop site, by 8:00 p.m. on Tuesday May 17th, 2016 in order to be counted. Postmarks do not count.

Columbia County Courthouse Elections Department

230 Strand St, St. Helens

Hours: M–Th 8:00 AM – 5:00 PM

Election Day: 7:00 AM – 8:00 PM

24-Hour Drive-up Drop Box

Located outside of 230 Strand St

Election Day: Up to 8:00 PM

Clatskanie Library

11 Lillich St, Clatskanie

Hours: M–W 10:00 AM – 7:00 PM

Th–Sat 10:00 AM – 5:30 PM

Election Day: 8:00 AM – 8:00 PM

Mist-Birkenfeld RFPD

12525 Oregon Highway 202, Mist

Hours: M–Th 9:00 AM – 5 PM

Election Day: 8:00 AM – 8:00 PM

Rainier City Hall

106 B St West, Rainier

Hours: M–F 9:00 AM – 5 PM

Election Day: 8:00 AM – 8:00 PM

Scappoose City Hall

33568 E. Columbia Ave, Scappoose

Hours: M–F 8:00 AM – 5 PM

Election Day: 8:00 AM–8:00 PM

24-Hour Drive-up Drop Box

Located outside of 33568 E. Columbia Ave

Election Day: Up to 8:00 PM

Vernonia Public Library

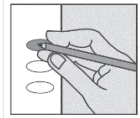
701 Weed Ave, Vernonia

Hours: M/W/F 10:00 AM – 5 PM

Tu–Th 1:00 PM – 7:00 PM

Sat 10:00 AM – 4:00 PM

Election Day: 12:00 PM–8:00 PM



VOTING INSTRUCTIONS

- 1. Examine** the ballot(s). Locate the candidates for each office and the YES or NO choice for each.
- 2. Mark your ballot.** Following the instructions on the ballot, mark the oval next to the candidate or response of your choice for each office or measure. Use a #2 pencil or pen. **Fill in the oval completely.**
- 3. WRITE IN.** To vote for a candidate whose name is not on the ballot, mark the oval next to the space provided on the ballot and write in the full name of the candidate.
- 4. Secrecy envelope.** **After voting,** please place **only** your voted ballot in the ballot secrecy envelope and seal the secrecy envelope.
- 5. Green signature return envelope.** Place the sealed secrecy envelope in the **GREEN SIGNATURE RETURN ENVELOPE** and seal the envelope. **Read and sign** the voter's statement on the return envelope. Your ballot will **NOT** be counted if the envelope is not signed.
- 6. Return your voted ballot.** Mail or deliver the signed and sealed return envelope in time to be received in the office of the County Clerk by 8 p.m. Election Day, May 17, 2016.

**REMEMBER TO CHECK BOTH SIDES OF YOUR
BALLOT**
